



LARIMAR

CITY & RESORT

Paradise Towers

Tower 2



Paradise Towers

Paradise Towers development is located on the second row of our promenade, offering views of the city's sports facilities, the lake from the Breeze Towers promotion, and the rear gardens of Horizon View.

This implies that this project, not only because of its location but also due to its 1, 2, and 3-bedroom residences, will have disruptive prices in the LATAM market and can generate a high return on investment from the beginning.

Its star-shaped pool and its distinctive building with sleek and elegant lines make it a secure investment for tourism investors. It's truly a paradise for investment.






LARIMAR
CITY & RESORT











Vistas Farallón



Vistas Piscina



Amenities



6 Penthouses



124 Apartments



1, 2 y 3 Bedrooms



Private Terraces



Private Parkings



24h Security



Elevator



Green Areas and Pools



Panoramics Views



BBQ y Gazebos



Children's Area





Paradise Towers Tower 2 | Level 1



BROADWALK



www.larimarcity.com



Note: The surfaces expressed, the dimensioning of pillars, the levels, steps of stairs, the situation of the downspouts, ventilation ducts and windows may experience variations during the work due to the requirements of the execution project, technical or legal requirements, or in order to improve the functionality of the houses. The textures and materials, as well as the furniture expressed in this plan are merely indicative and informative. Some turn of door or disposition of toilets may suffer some variation. The houses are sold unfurnished.



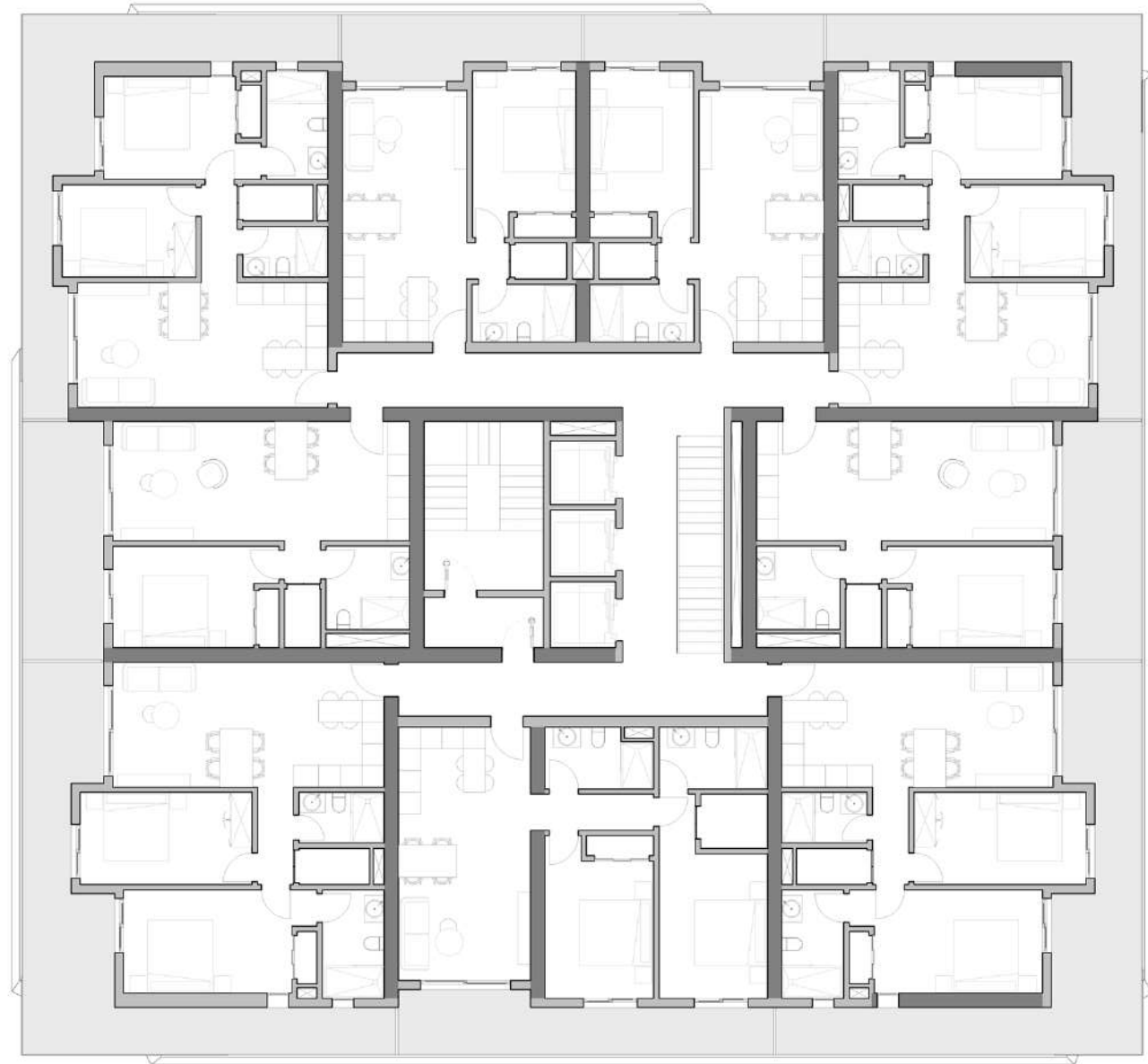
Paradise Towers
Tower 2 | Level 2 to 14



BROADWALK



www.larimarcity.com



Note: The surfaces expressed, the dimensioning of pillars, the levels, steps of stairs, the situation of the downspouts, ventilation ducts and windows may experience variations during the work due to the requirements of the execution project, technical or legal requirements, or in order to improve the functionality of the houses. The textures and materials, as well as the furniture expressed in this plan are merely indicative and informative. Some turn of door or disposition of toilets may suffer some variation. The houses are sold unfurnished.



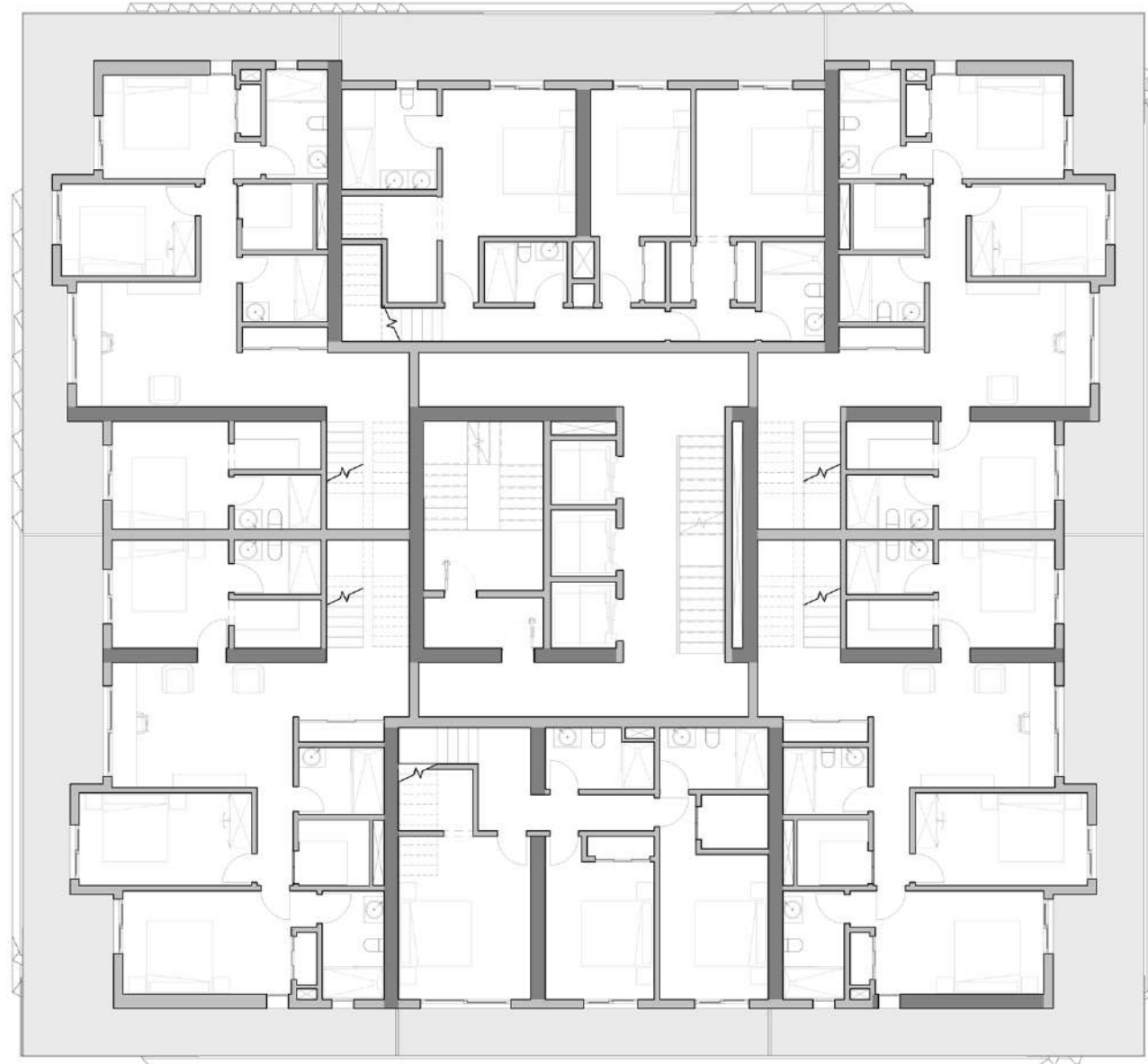
Paradise Towers
Tower 2 | Level 15



BROADWALK



www.larimarcity.com



Note: The surfaces expressed, the dimensioning of pillars, the levels, steps of stairs, the situation of the downspouts, ventilation ducts and windows may experience variations during the work due to the requirements of the execution project, technical or legal requirements, or in order to improve the functionality of the houses. The textures and materials, as well as the furniture expressed in this plan are merely indicative and informative. Some turn of door or disposition of toilets may suffer some variation. The houses are sold unfurnished.



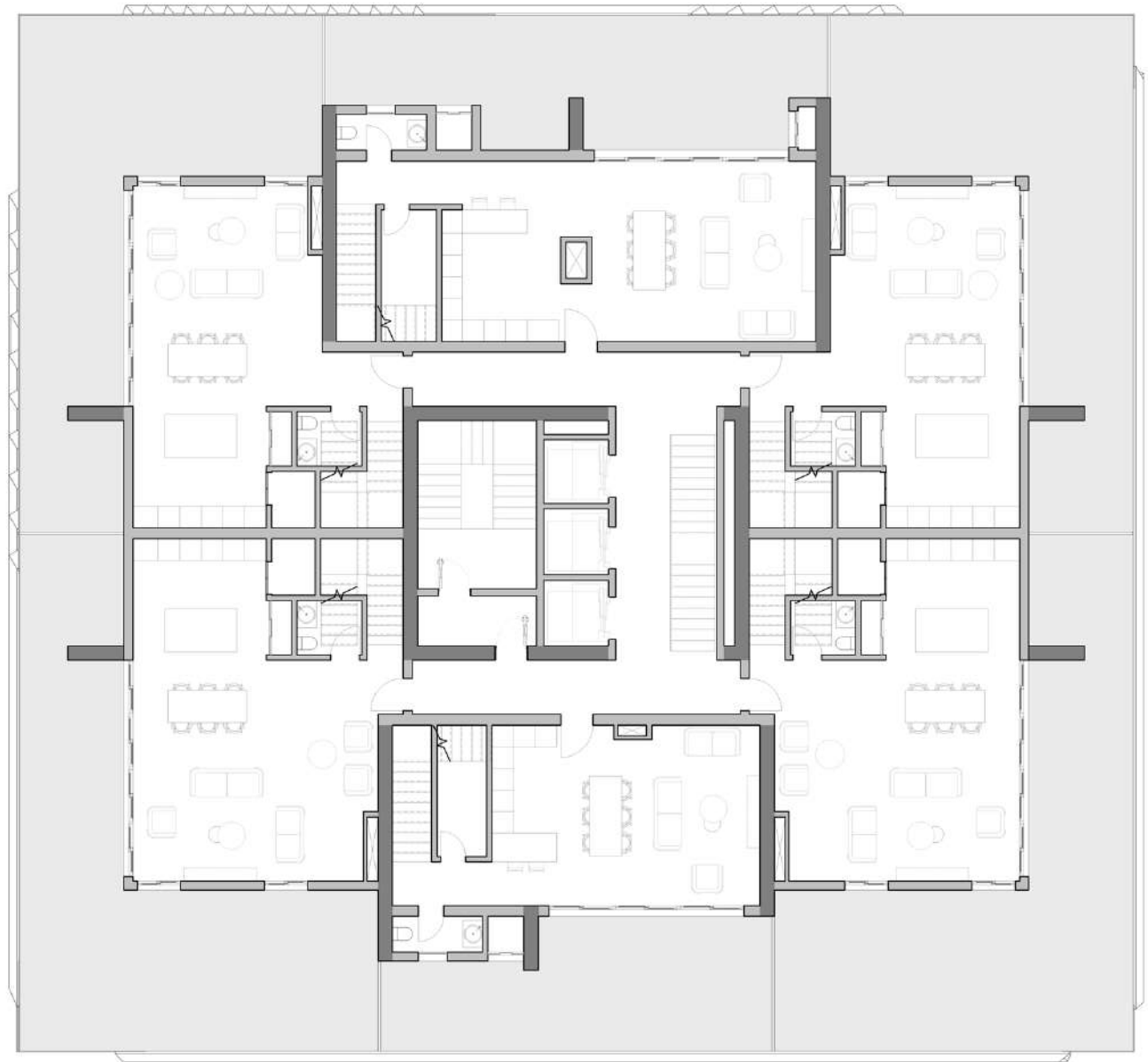
Paradise Towers
Tower 2 | Level 16



BROADWALK



www.larimarcity.com



Note: The surfaces expressed, the dimensioning of pillars, the levels, steps of stairs, the situation of the downspouts, ventilation ducts and windows may experience variations during the work due to the requirements of the execution project, technical or legal requirements, or in order to improve the functionality of the houses. The textures and materials, as well as the furniture expressed in this plan are merely indicative and informative. Some turn of door or disposition of toilets may suffer some variation. The houses are sold unfurnished.



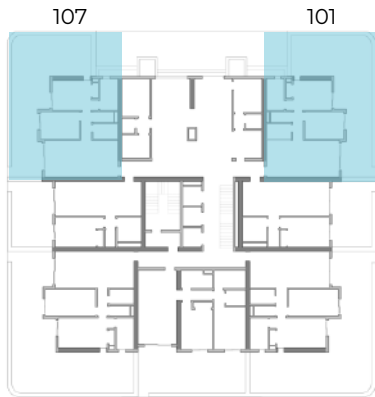
Paradise Towers

Tower 2 | Level 1

Apartments 101 – 107

Interior area: 761,59 S.Q. FT. 70,78 S.Q. M.
Terrace area: 727,91 S.Q. FT. 67,65 S.Q. M.
Total area: 1.489,50 S.Q. FT 138,43 S.Q. M.

2 BEDROOMS
2 BATHROOMS
PRIVATE TERRACE



www.larimarcity.com



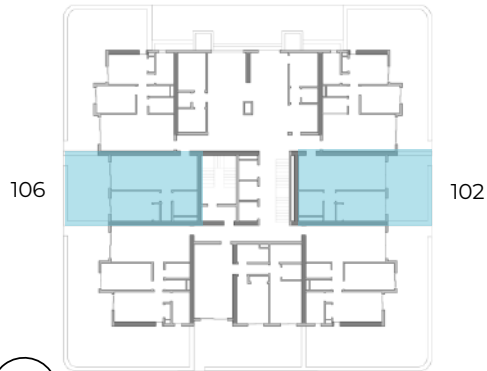
Note: The surfaces expressed, the dimensioning of pillars, the levels, steps of stairs, the situation of the downspouts, ventilation ducts and windows may experience variations during the work due to the requirements of the execution project, technical or legal requirements, or in order to improve the functionality of the houses. The textures and materials, as well as the furniture expressed in this plan are merely indicative and informative. Some turn of door or disposition of toilets may suffer some variation. The houses are sold unfurnished.



Paradise Towers
Tower 2 | Level 1
Apartments 102 – 106

Interior area: 621,07 S.Q. FT. 57,72 S.Q. M.
Terrace area: 296,98 S.Q. FT. 27,60 S.Q. M.
Total area: 918,05 S.Q. FT. 85,32 S.Q. M.

1 BEDROOM
1 BATHROOM
PRIVATE TERRACE



www.larimarcity.com



Note: The surfaces expressed, the dimensioning of pillars, the levels, steps of stairs, the situation of the downspouts, ventilation ducts and windows may experience variations during the work due to the requirements of the execution project, technical or legal requirements, or in order to improve the functionality of the houses. The textures and materials, as well as the furniture expressed in this plan are merely indicative and informative. Some turn of door or disposition of toilets may suffer some variation. The houses are sold unfurnished.



Paradise Towers
Tower 2 | Level 1

Apartments 103 – 105

Interior area:	853,38 S.Q. FT.	79,31 S.Q. M.
Terrace area:	972,60 S.Q. FT.	90,39 S.Q. M.
Total area:	1.825,98 S.Q. FT.	169,70 S.Q. M.

- 2 BEDROOMS
- 2 BATHROOMS
- PRIVATE TERRACE



105 103
www.larimarcity.com



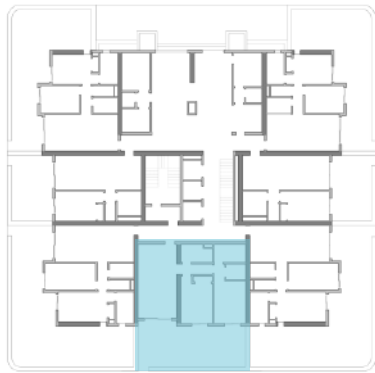
Note: The surfaces expressed, the dimensioning of pillars, the levels, steps of stairs, the situation of the downspouts, ventilation ducts and windows may experience variations during the work due to the requirements of the execution project, technical or legal requirements, or in order to improve the functionality of the houses. The textures and materials, as well as the furniture expressed in this plan are merely indicative and informative. Some turn of door or disposition of toilets may suffer some variation. The houses are sold unfurnished.



Paradise Towers
Tower 2 | Level 1
Apartment 104

Interior area: 881,35 S.Q. FT. 81,91 S.Q. M.
Terrace area: 510,13 S.Q. FT. 47,41 S.Q. M.
Total area: 1,391,48 S.Q. FT. 129,32 S.Q. M.

2 BEDROOMS
2 BATHROOMS
PRIVATE TERRACE



104

www.larimarcity.com



Note: The surfaces expressed, the dimensioning of pillars, the levels, steps of stairs, the situation of the downspouts, ventilation ducts and windows may experience variations during the work due to the requirements of the execution project, technical or legal requirements, or in order to improve the functionality of the houses. The textures and materials, as well as the furniture expressed in this plan are merely indicative and informative. Some turn of door or disposition of toilets may suffer some variation. The houses are sold unfurnished.

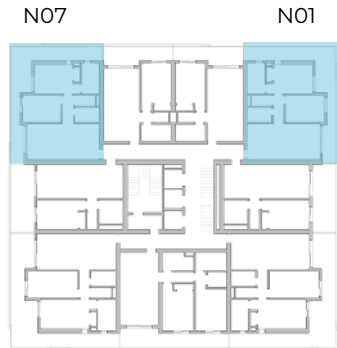


Paradise Towers

Tower 2 | Level 2 to 14
Apartments N01 – N07

Interior area: 761,59 S.Q. FT. 70,78 S.Q. M.
Terrace area: 262,97 S.Q. FT. 24,44 S.Q. M.
Total area: 1.024,56 S.Q. FT 95,22 S.Q. M.

2 BEDROOMS
2 BATHROOMS
PRIVATE TERRACE



www.larimarcity.com



Note: The surfaces expressed, the dimensioning of pillars, the levels, steps of stairs, the situation of the downspouts, ventilation ducts and windows may experience variations during the work due to the requirements of the execution project, technical or legal requirements, or in order to improve the functionality of the houses. The textures and materials, as well as the furniture expressed in this plan are merely indicative and informative. Some turn of door or disposition of toilets may suffer some variation. The houses are sold unfurnished.



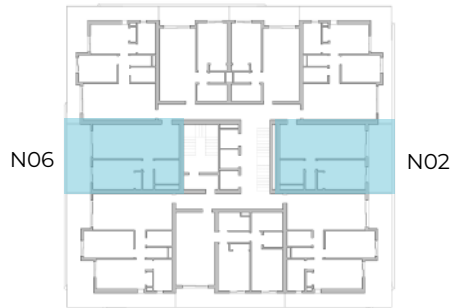
Paradise Towers

Tower 2 | Level 2 to 14

Apartments N02 – N06

Interior area: 621,07 S.Q. FT. 57,72 S.Q. M.
Terrace area: 151,93 S.Q. FT. 14,12 S.Q. M.
Total area: 773,00 S.Q. FT. 71,84 S.Q. M.

1 BEDROOM
1 BATHROOM
PRIVATE TERRACE



www.larimarcity.com



Note: The surfaces expressed, the dimensioning of pillars, the levels, steps of stairs, the situation of the downspouts, ventilation ducts and windows may experience variations during the work due to the requirements of the execution project, technical or legal requirements, or in order to improve the functionality of the houses. The textures and materials, as well as the furniture expressed in this plan are merely indicative and informative. Some turn of door or disposition of toilets may suffer some variation. The houses are sold unfurnished.



Paradise Towers

Tower 2 | Level 2 to 14

Apartments N03 – N05

Interior area: 853,38 S.Q. FT. 79,31 S.Q. M.
Terrace area: 360,14 S.Q. FT. 33,47 S.Q. M.
Total area: 1.213,52 S.Q. FT. 112,78 S.Q. M.

- 2 BEDROOMS
- 2 BATHROOMS
- PRIVATE TERRACE



N05 N03



www.larimarcity.com



Note: The surfaces expressed, the dimensioning of pillars, the levels, steps of stairs, the situation of the downspouts, ventilation ducts and windows may experience variations during the work due to the requirements of the execution project, technical or legal requirements, or in order to improve the functionality of the houses. The textures and materials, as well as the furniture expressed in this plan are merely indicative and informative. Some turn of door or disposition of toilets may suffer some variation. The houses are sold unfurnished.



Paradise Towers

Tower 2 | Level 2 to 14

Apartments N04

Interior area:	881,35 S.Q. FT.	81,91 S.Q. M.
Terrace area:	151,93 S.Q. FT.	14,12 S.Q. M.
Total area:	1.033,28 S.Q. FT.	96,03 S.Q. M.

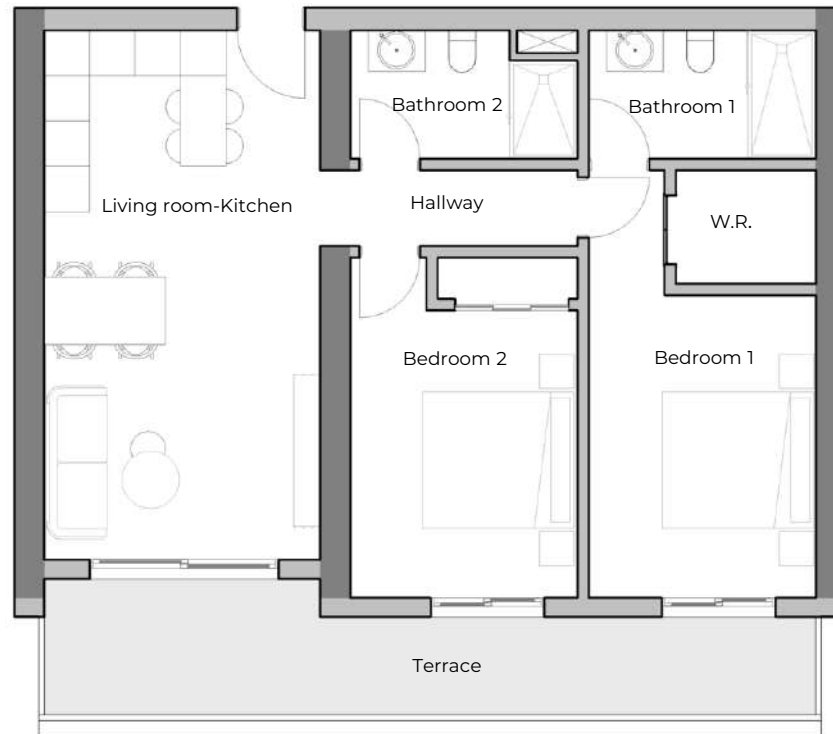
- 2 BEDROOMS
- 2 BATHROOMS
- PRIVATE TERRACE



N04



www.larimarcity.com



Note: The surfaces expressed, the dimensioning of pillars, the levels, steps of stairs, the situation of the downspouts, ventilation ducts and windows may experience variations during the work due to the requirements of the execution project, technical or legal requirements, or in order to improve the functionality of the houses. The textures and materials, as well as the furniture expressed in this plan are merely indicative and informative. Some turn of door or disposition of toilets may suffer some variation. The houses are sold unfurnished.



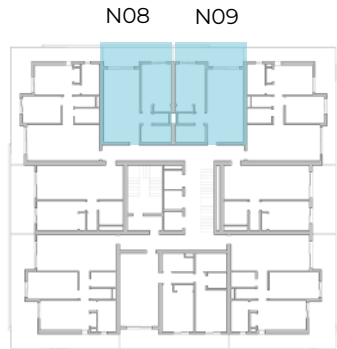
Paradise Towers

Tower 2 | Level 2 to 14

Apartments N08 – N09

Interior area: 562,75 S.Q. FT. 52,30 S.Q. M.
Terrace area: 112,12 S.Q. FT. 10,42 S.Q. M.
Total area: 674,87 S.Q. FT. 62,72 S.Q. M.

1 BEDROOM
1 BATHROOM
PRIVATE TERRACE



www.larimarcity.com



Note: The surfaces expressed, the dimensioning of pillars, the levels, steps of stairs, the situation of the downspouts, ventilation ducts and windows may experience variations during the work due to the requirements of the execution project, technical or legal requirements, or in order to improve the functionality of the houses. The textures and materials, as well as the furniture expressed in this plan are merely indicative and informative. Some turn of door or disposition of toilets may suffer some variation. The houses are sold unfurnished.

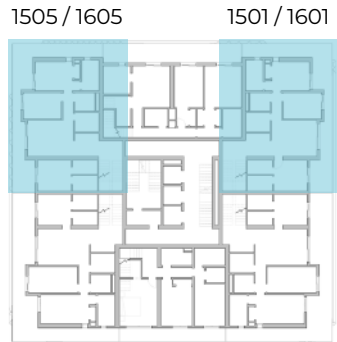


Paradise Towers Tower 2 | Level 15 and 16

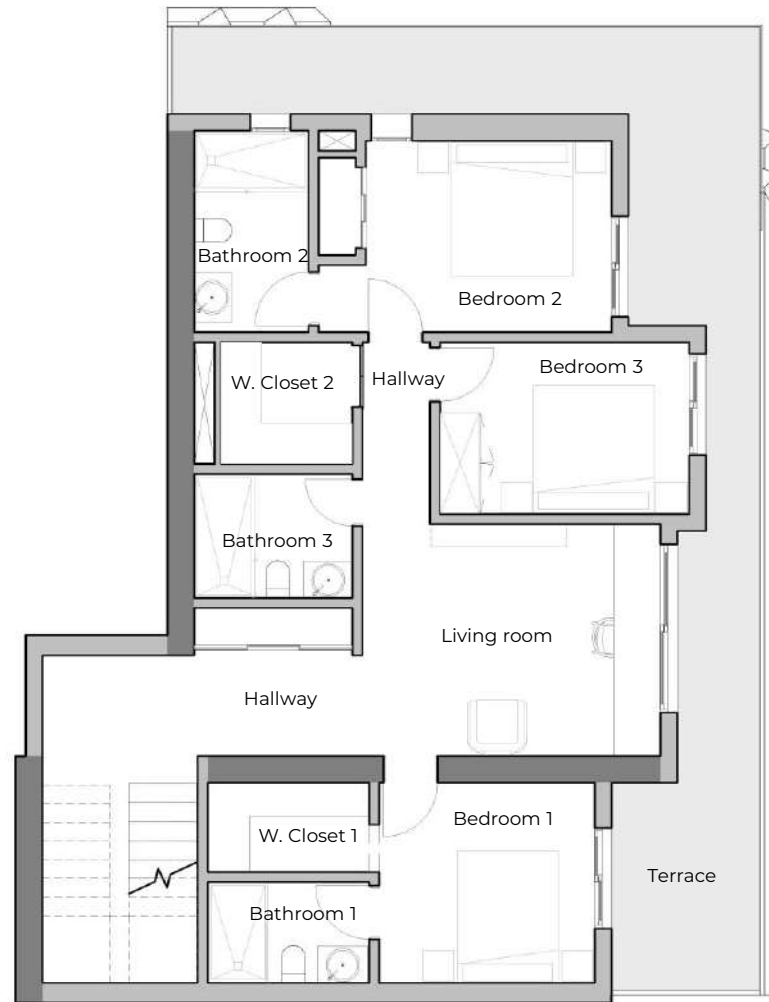
Penthouses 1501/1601 and 1505/1605

Interior area: 1,860,30 S.Q. FT. 172,89 S.Q. M.
 Terrace area: 1.049,32 S.Q. FT. 97,52 S.Q. M.
 Total area: 2,909,62 S.Q. FT. 270,41 S.Q. M.

3 BEDROOMS
 3 BATHROOMS
 ½ BATHROOM
 PRIVATE TERRACE



www.larimarcity.com



Level 15



Level 16

Note: The surfaces expressed, the dimensioning of pillars, the levels, steps of stairs, the situation of the downspouts, ventilation ducts and windows may experience variations during the work due to the requirements of the execution project, technical or legal requirements, or in order to improve the functionality of the houses. The textures and materials, as well as the furniture expressed in this plan are merely indicative and informative. Some turn of door or disposition of toilets may suffer some variation. The houses are sold unfurnished.



Paradise Towers

Tower 2 | Level 15 and 16

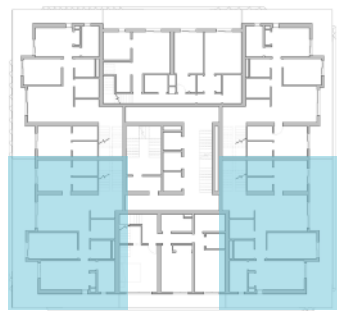
Penthouses 1502/1602 y 1504/1604

Interior area: 1.928,73 S.Q. FT. 179,25 S.Q. M.

Terrace area: 1.220,29 S.Q. FT. 113,41 S.Q. M.

Total area: 3.149,02 S.Q. FT. 292,66 S.Q. M.

- 3 BEDROOMS
- 3 BATHROOMS
- ½ BATHROOM
- PRIVATE TERRACE



1504 / 1604

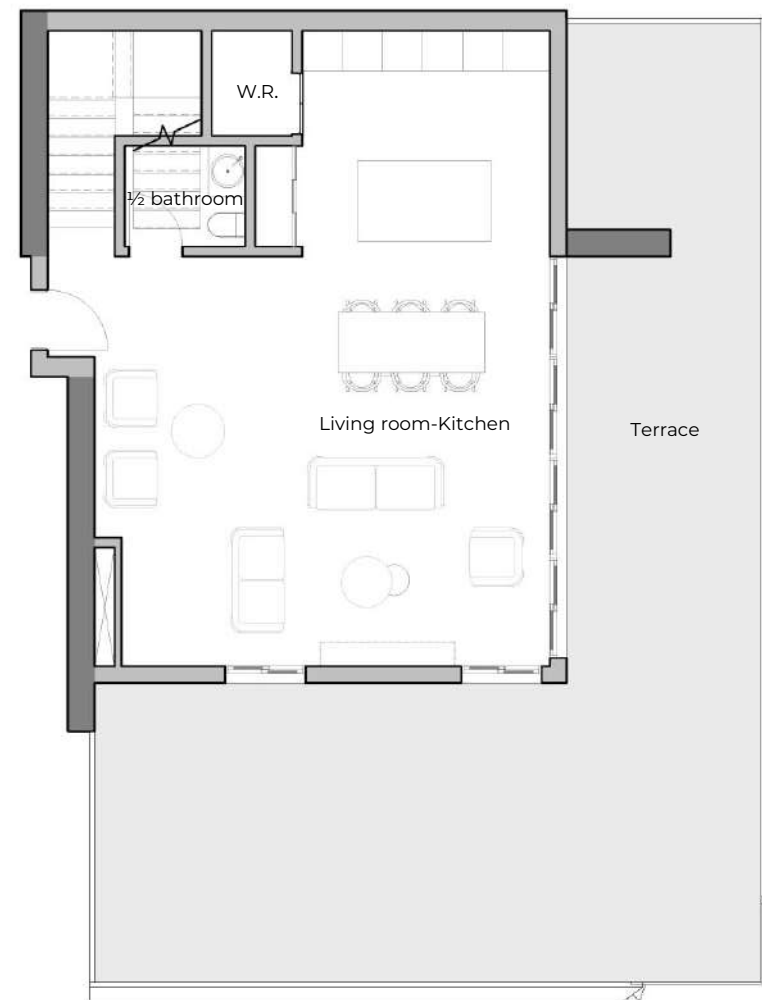
1502 / 1602



www.larimarcity.com



Level 15



Level 16

Note: The surfaces expressed, the dimensioning of pillars, the levels, steps of stairs, the situation of the downspouts, ventilation ducts and windows may experience variations during the work due to the requirements of the execution project, technical or legal requirements, or in order to improve the functionality of the houses. The textures and materials, as well as the furniture expressed in this plan are merely indicative and informative. Some turn of door or disposition of toilets may suffer some variation. The houses are sold unfurnished.



Paradise Towers
 Tower 2 | Level 15 and 16
 Penthouse 1503/1603

Interior area: 1.582,90 S.Q. FT. 147,11 S.Q. M.
 Terrace area: 521,00 S.Q. FT. 48,42 S.Q. M.
 Total area: 2.103,90 S.Q. FT. 195,53 S.Q. M.

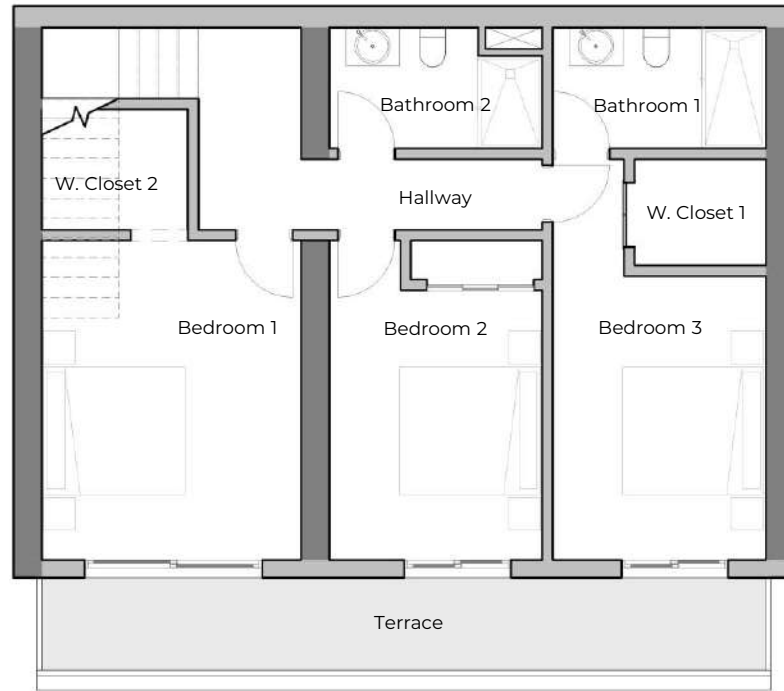
- 3 BEDROOMS
- 2 BATHROOMS
- ½ BATHROOM
- PRIVATE TERRACE



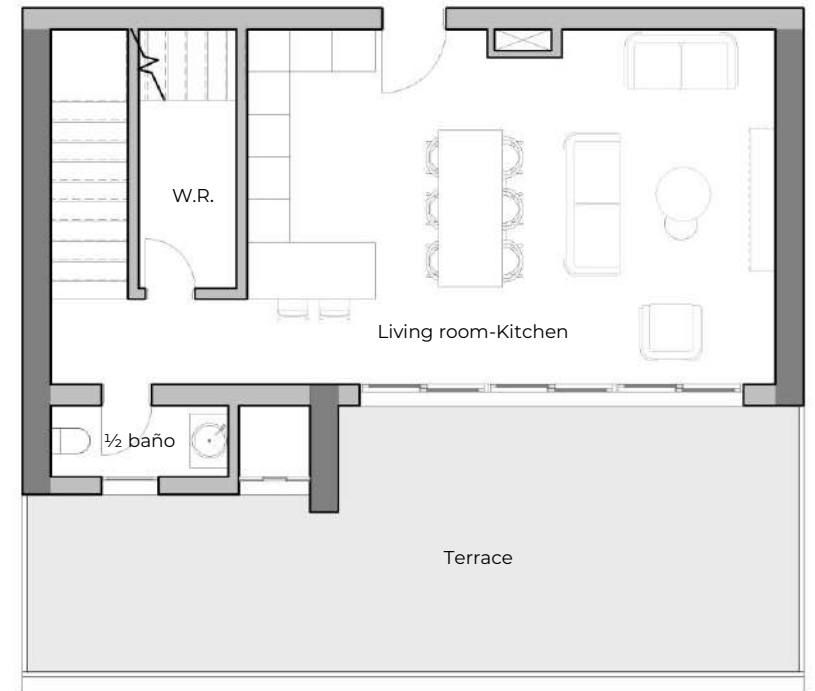
1503 / 1603



www.larimarcity.com



Level 15



Level 16

Note: The surfaces expressed, the dimensioning of pillars, the levels, steps of stairs, the situation of the downspouts, ventilation ducts and windows may experience variations during the work due to the requirements of the execution project, technical or legal requirements, or in order to improve the functionality of the houses. The textures and materials, as well as the furniture expressed in this plan are merely indicative and informative. Some turn of door or disposition of toilets may suffer some variation. The houses are sold unfurnished.



Paradise Towers
 Tower 2 | Level 15 and 16
 Penthouse 1506/1606

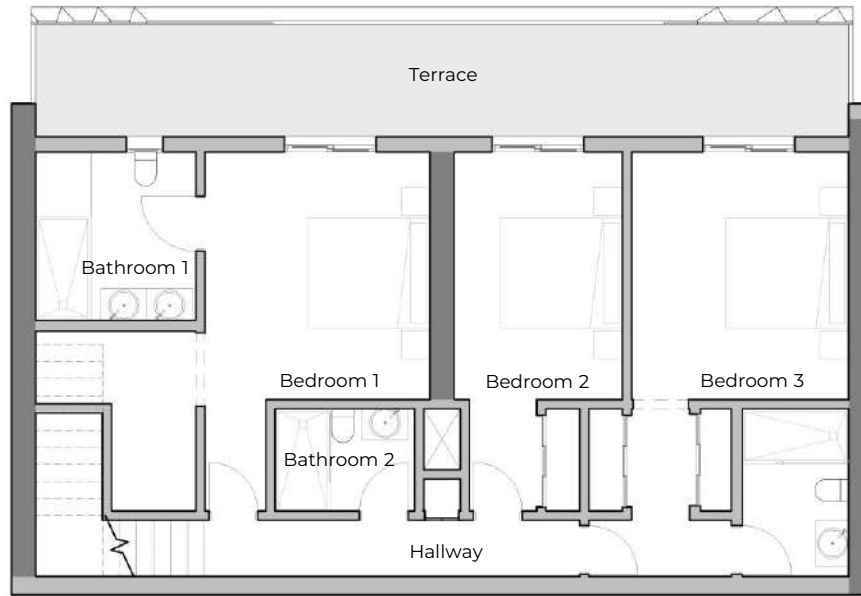
Interior area: 1.969,19 S.Q. FT. 183,01 S.Q. M.
 Terrace area: 745,56 S.Q. FT. 69,29 S.Q. M.
 Total area: 2.714,75 S.Q. FT. 252,30 S.Q. M.

3 BEDROOMS
 2 BATHROOMS
 ½ BATHROOM
 PRIVATE TERRACE

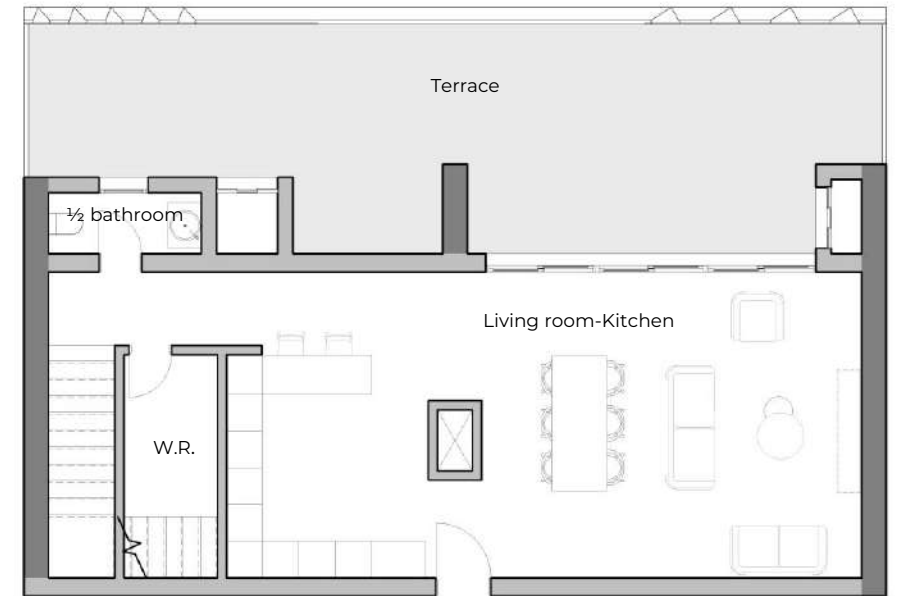
1506 / 1606



www.larimarcity.com



Level 15



Level 16

Note: The surfaces expressed, the dimensioning of pillars, the levels, steps of stairs, the situation of the downspouts, ventilation ducts and windows may experience variations during the work due to the requirements of the execution project, technical or legal requirements, or in order to improve the functionality of the houses. The textures and materials, as well as the furniture expressed in this plan are merely indicative and informative. Some turn of door or disposition of toilets may suffer some variation. The houses are sold unfurnished.

















LARIMAR

CITY & RESORT

